

**Cover Sheet  
Catholic Charities**



**2.03 MW PV System**

- (15) 100kW SolarEdge inverters
- (5072) LG Electronics LG400w Modules
- (2536) S850P SolarEdge Optimizers
- (1) 1500 kVA 480/277/13.2kV Transformer
- DC rating = 2.03 MW
- AC rating = 1.50 MW

Table of Contents

0001	Coversheet
S001	Solar Array Height
L001	Landscape Aerial View
L002	Street Views With Proposed Landscape
L003	Environmental Improvements
N001	Neighborhood Sightline Map
N002	Eastern Ave Street Level View
N003	Randolph St. NE Street Level View
N004	Randolph St. NE (closest residence) Street Level View
N005	Randolph St. NE (closest residence) Second Floor View
N006	30th Place NE Ground Level View
N007	30th Place NE Second Floor View
N008	Otis St. NE Street Level View
N009	Otis St. NE Second Floor View
N010	26th St. NE Street Level View
N011	26th St. NE Second Floor View
N012	Perry St. NE (closest residence) Street Level View
N013	Perry St. NE (closest residence) Second Floor View
S002	Solar Operations
S003	Setback Schematic

Board of Zoning Adjustment  
District of Columbia  
CASE NO. 19927  
EFFECTIVE 03/14/18

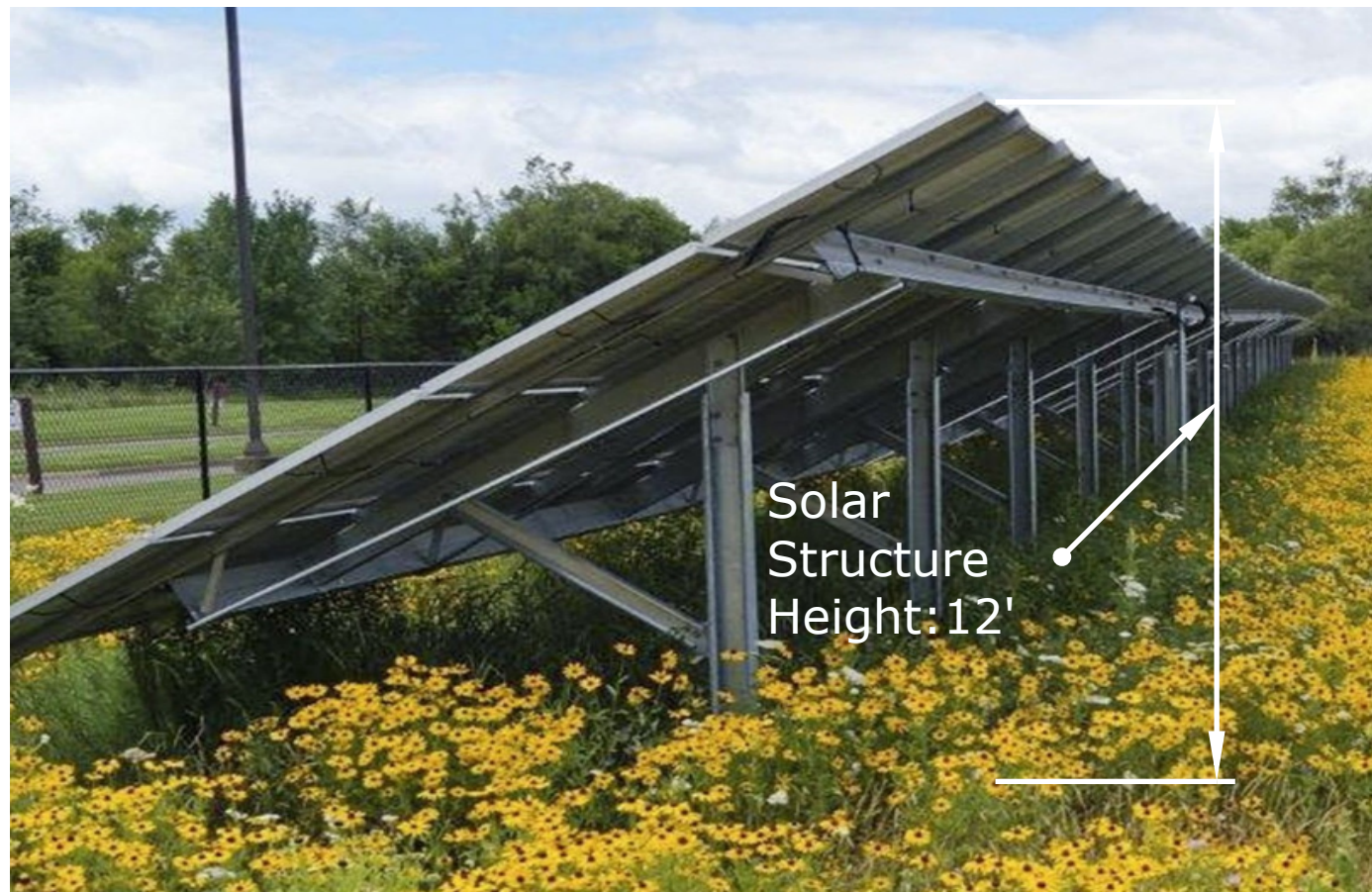


**Solar Energy Services, Inc.**

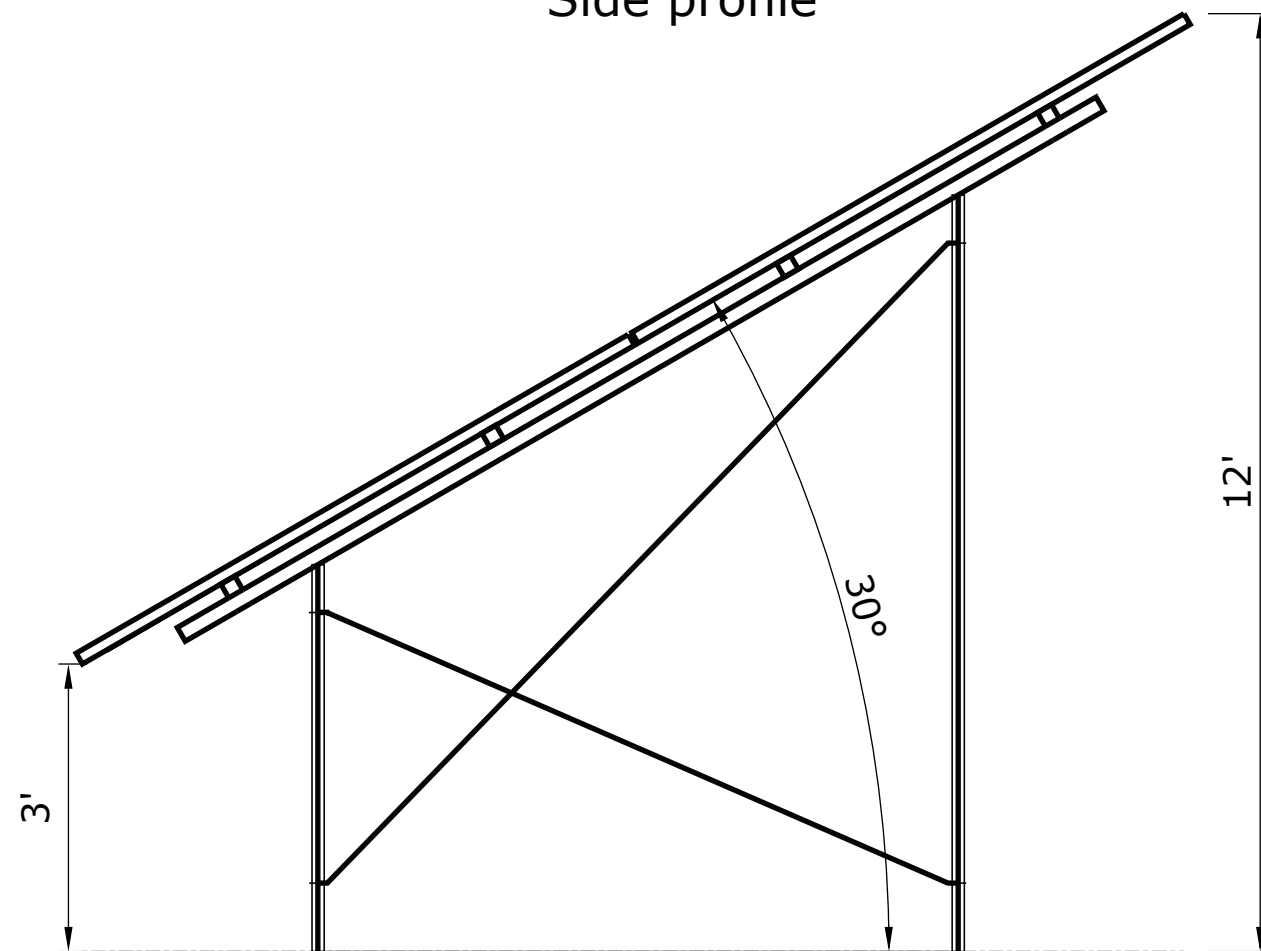
1514 Jabez Run, Suite # 103 Millersville Maryland, 21108

**Catholic Charities  
2800 Otis St. NE  
Washington, DC 20018**

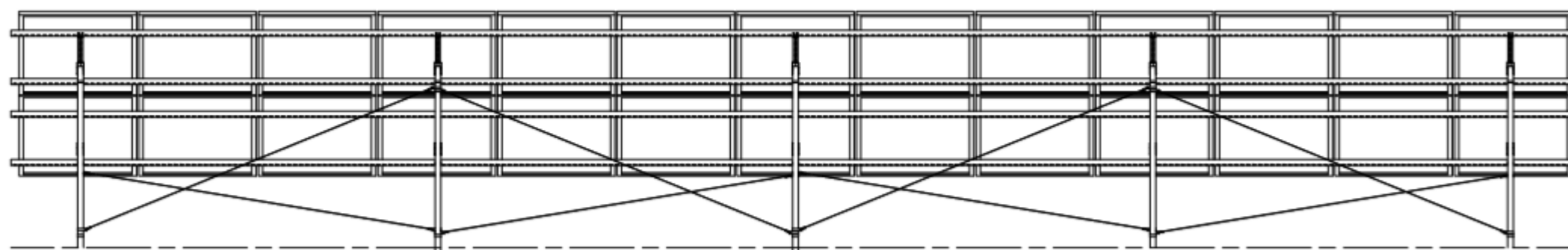
Array Height



Side profile



Back View, not to scale, taken from racking manuf. spec sheet



GROUND SURFACE SHOWN LEVEL



1514 Jabez Run, Suite # 103 Millersville Maryland, 21108

Catholic Charities  
2800 Otis St. NE  
Washington, DC 20018

# Landscape Aerial



## Legend:

-  Existing Tree to Remain
-  Proposed Yoshino Japanese Cedar
-  Proposed Bracken's Brown Beauty Magnolia
-  Proposed Okame Cherry
-  Proposed American Holly
-  Proposed Native Groundcover
-  Proposed Solar Array (Typical)
-  Section Line



## Proposed Plant Callouts



Plant:	Yoshino Japanese Cedar
Planted Size:	7-8'
Qty:	25



Plant:	Bracken's Brown Beauty Magnolia
Planted Size:	7-8'
Qty:	22



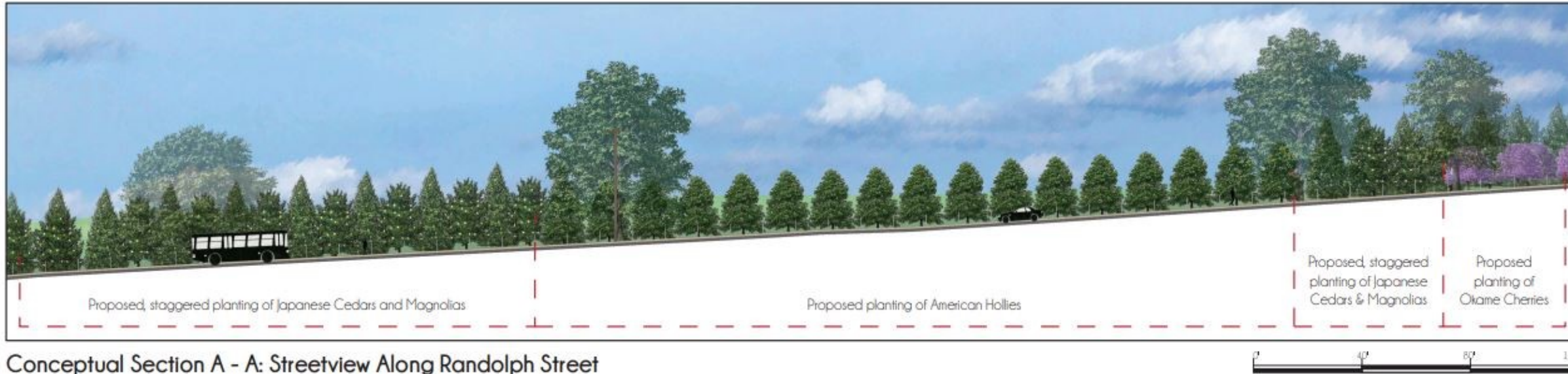
Plant:	Okame Cherry
Planted Size:	10-12'
Qty:	12



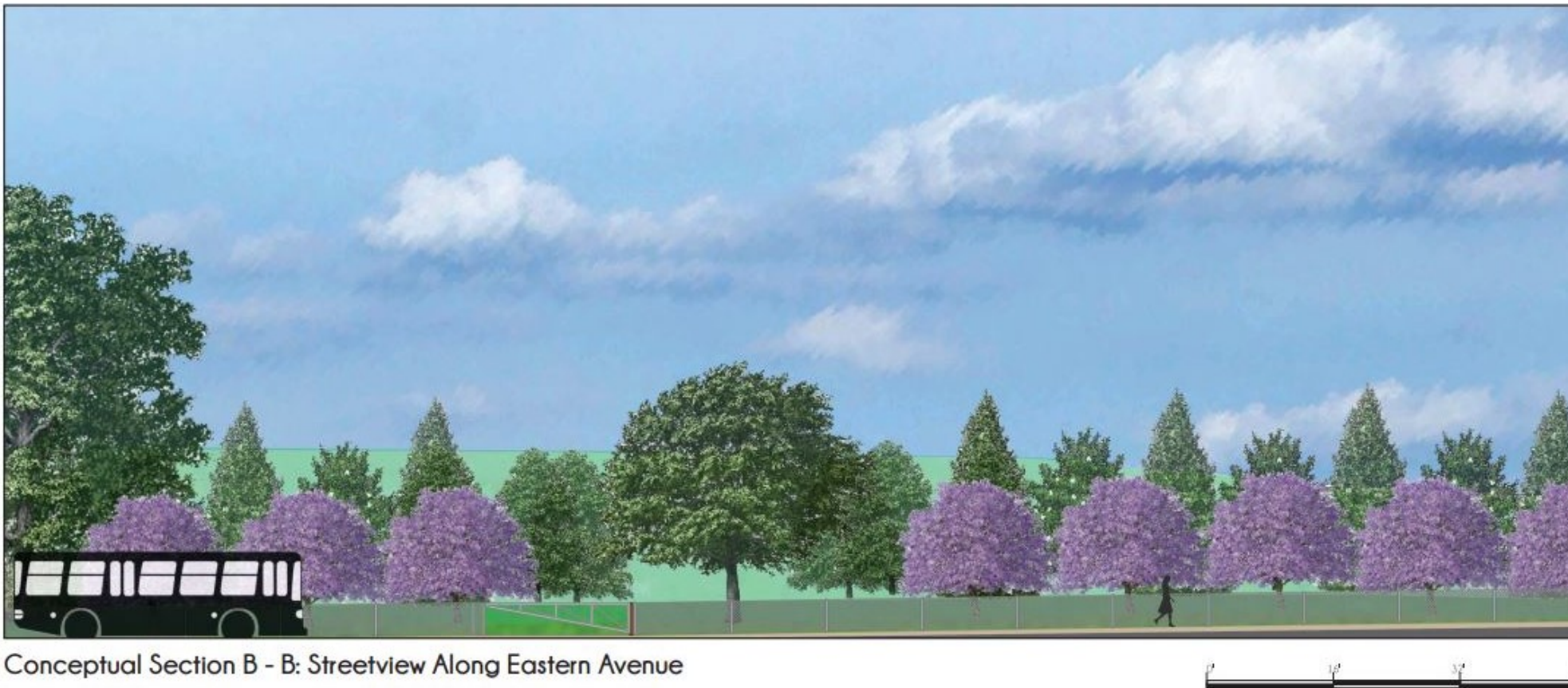
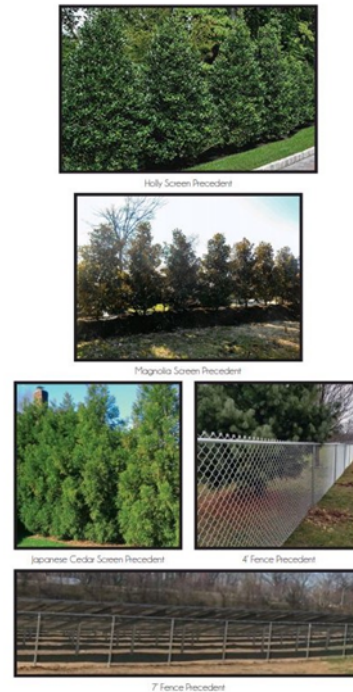
Plant:	American Holly
Planted Size:	5-6'
Qty:	50



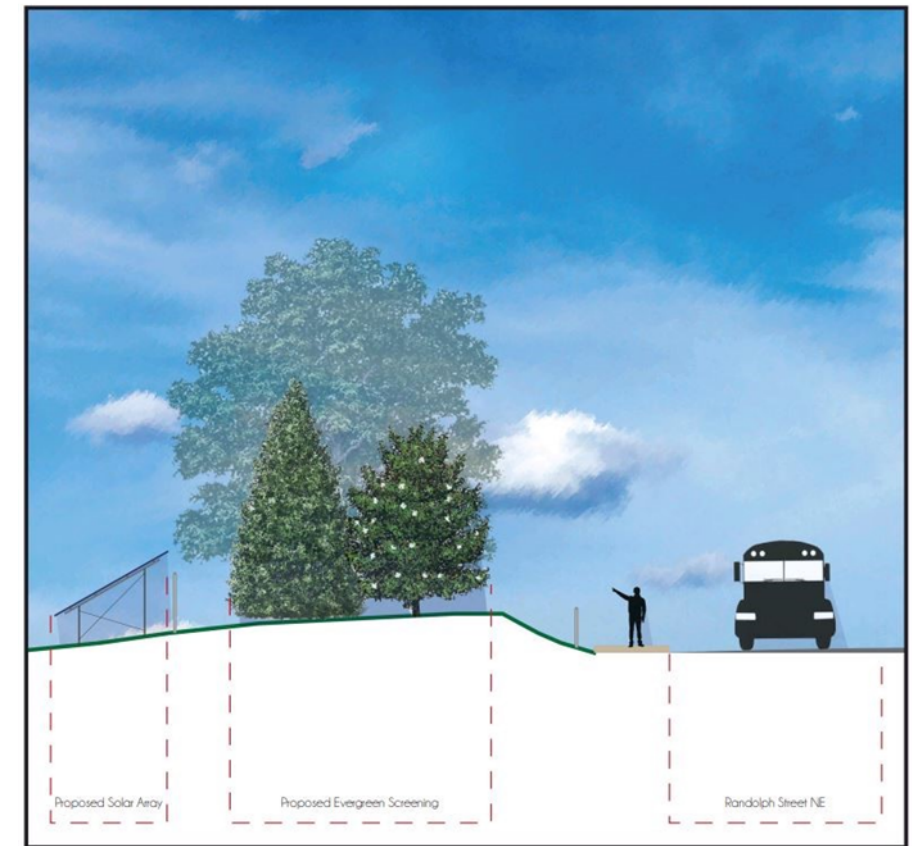
# Landscape Views



Conceptual Section A - A: Streetview Along Randolph Street



Conceptual Section B - B: Streetview Along Eastern Avenue



Section C - C: View from Randolph Street into the Site

# Environmental Improvements



Addition of 109 trees,  
4 different species



Natural Land Cover/ Pollinator Meadow



Bioretention elements for  
stormwater management  
as needed

Neighborhood Sightline Map



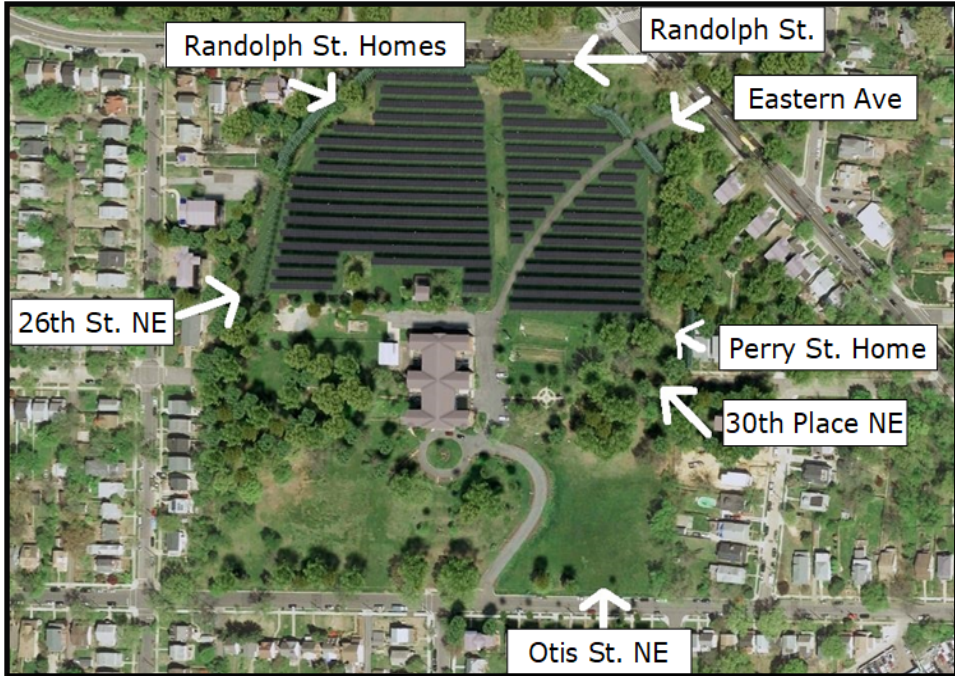
White arrows represent sightline views into property



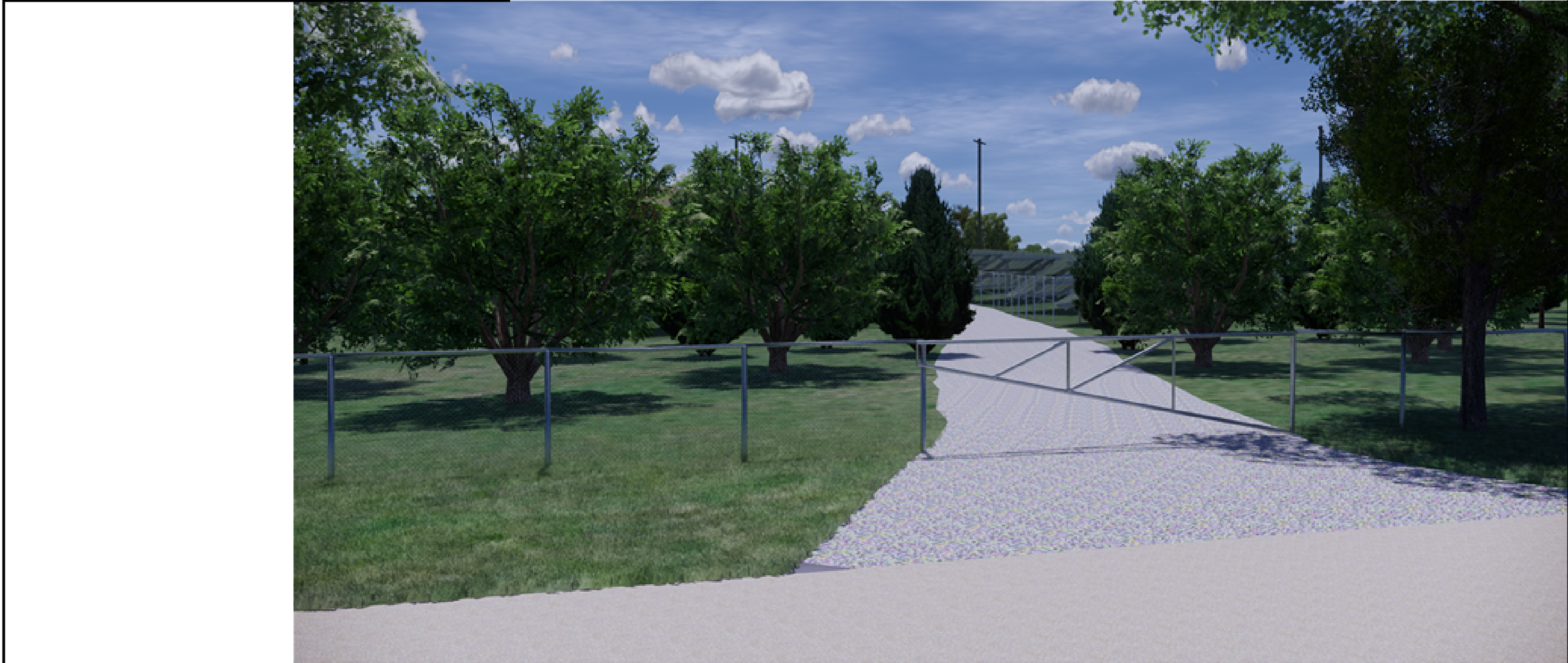
Solar Energy Services, Inc.

1514 Jabez Run, Suite # 103 Millersville Maryland, 21108

Catholic Charities  
2800 Otis St. NE  
Washington, DC 20018



Eastern Ave Sightline  
Street Level View

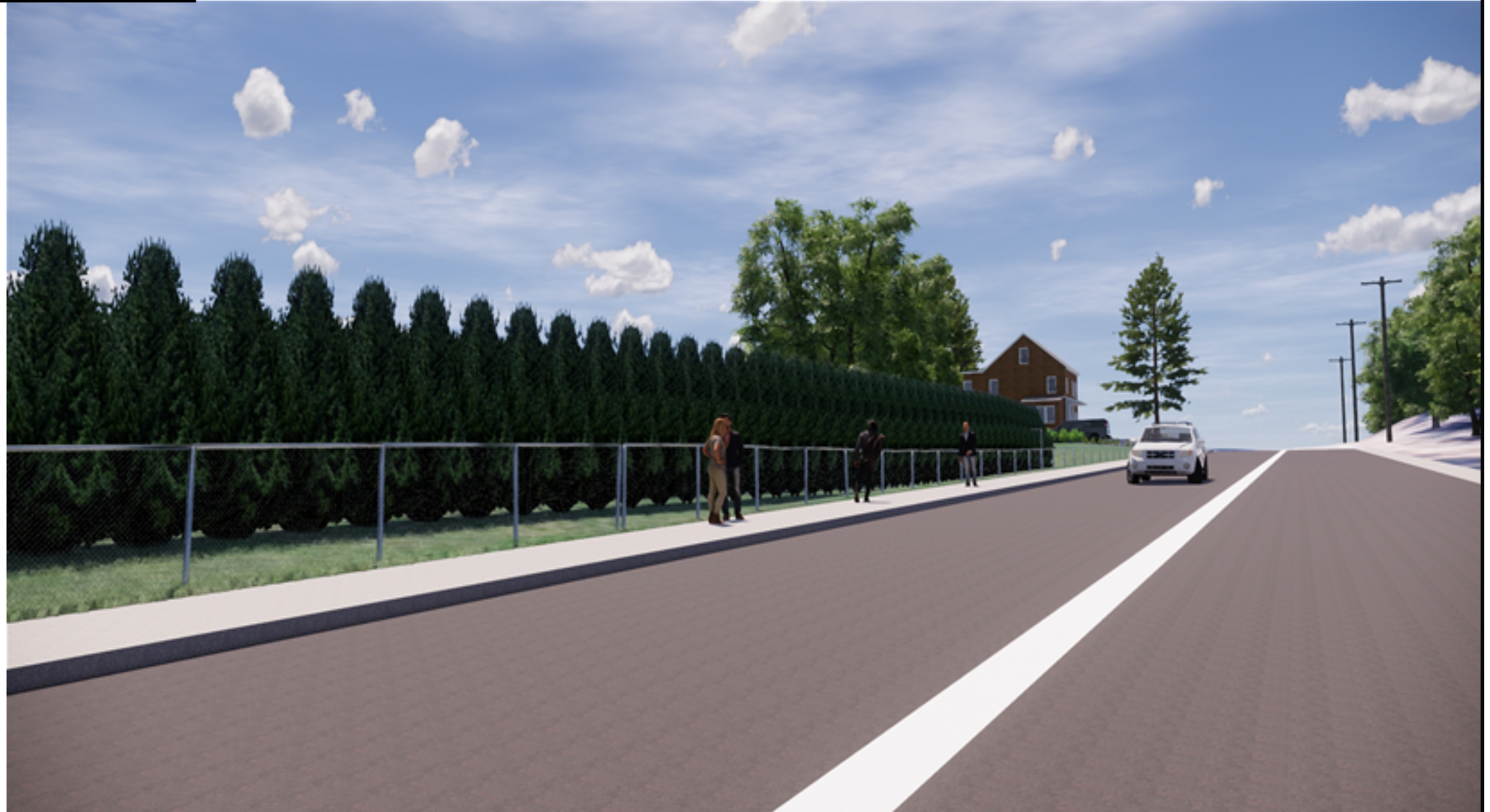


1514 Jabez Run, Suite # 103 Millersville Maryland, 21108

Catholic Charities  
2800 Otis St. NE  
Washington, DC 20018



Randolph St. Sightline  
Street Level View



Catholic Charities  
 2800 Otis St. NE  
 Washington, DC 20018